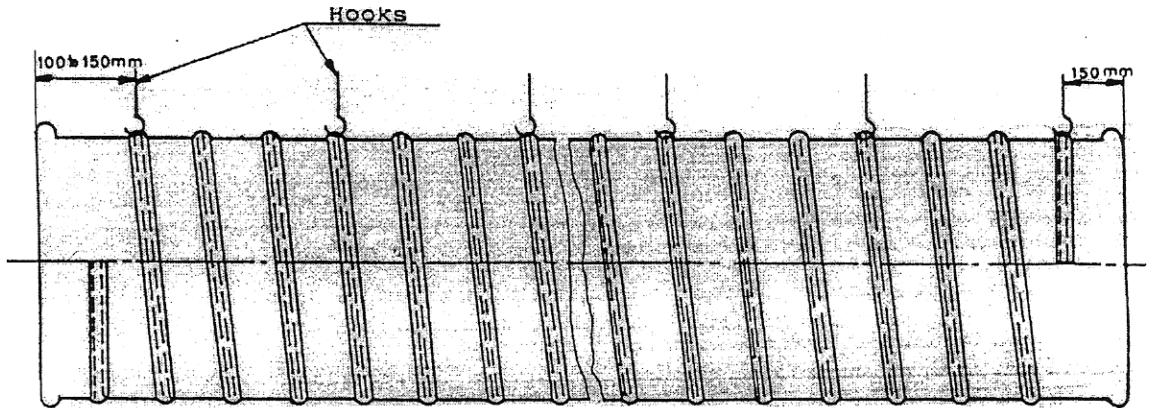
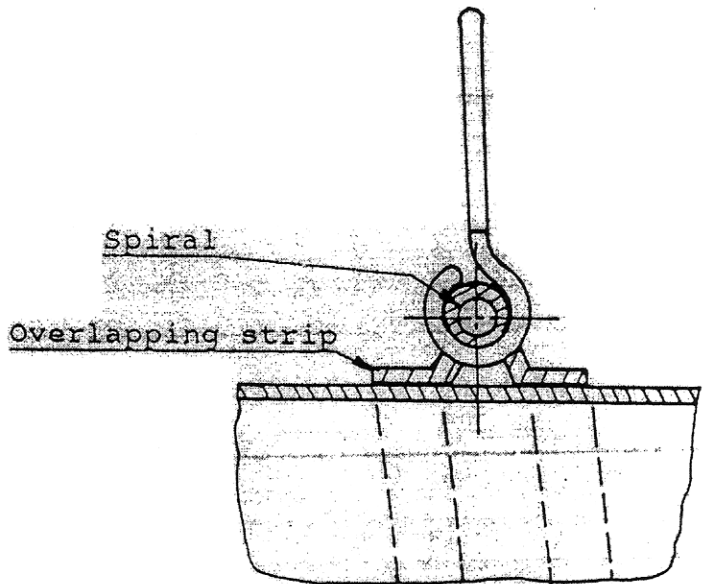
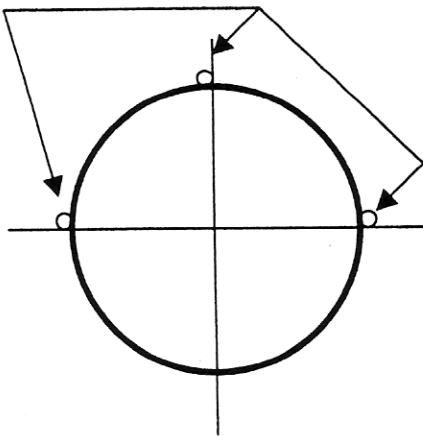


SPIRAL REINFORCED DUCTING



FLEXIBLE SUCTION DUCT

3 rows of suspension points



This ducting is made from our RV1923 type material. Spring steel wire is welded on to the duct using a special extruded P.V.C. profile with wear protection.

Standard sizes produced are:

| DIA- | | LENGTH |
|------|---|--------|
| 12" | X | 25' |
| 16" | X | 25' |
| 20" | X | 25' |
| 24" | X | 25' |
| 30" | X | 25' |
| 36" | X | 25' |

Standard pitches are 4" and 6".
Other combinations can be made to your specification.

| | |
|-------------------------|--|
| | <p>ROCVENT INC. PHONE: 705-692-5854 FAX: 705-692-9044 www.rocvent.com</p> |
| <p>DATE: SCALE:</p> | <p>SPIRAL DUCTING</p> |
| | |